

2023 LEXUS ES350

LUXURY REDefined



Extraordinary Design





LANE TRACE ASSIST



18" WHEELS



12.3" INFOTAINMENT



SRS AIRBAGS

SPECIFICATIONS AND FEATURES

SPECIFICATION	PRIME	ELITE
ENGINE	3.5L, 24-VALVE V6, DOHC, VVT-IW (INTAKE), VVT-I (EXHAUST)	
POWER	298HP @ 6500 - 6600 RPM	
TORQUE	36.3 KG.M @ 4600 - 4700 RPM	
TRANSMISSION	DIRECT SHIFT 8-SPEED AUTOMATIC TRANSMISSION	
DRIVE TRAIN LAYOUT	FRONT WHEEL DRIVE	
DRIVE MODE	ECO / NORMAL / SPORT	
FUEL TANK CAPACITY	60 LTR	
EXTERIOR		
TYRE AND DISC	215/55R17 SM AL-STD - (NEW DESIGN)	235/45R18 SM AL-HIGH
FRONT GRILLE (NEW DESIGN)	✓	✓
HEADLAMP BI-LED	✓	✓
CORNERING LAMP, REAR SPOILER	✓	✓
SUNROOF	MOONROOF WITH TILT & SLIDE	PANORAMIC GLASS ROOF WITH FRONT PORTION TILT/ SLIDE
POWER RETRACTABLE OUTER REAR VIEW MIRRORS WITH AUTO TILT-DOWN ON REVERSE MODE	✓	MEMORY
LUXURY CHROME PACKAGE: SIDE PROTECTION MOULDING AND DOOR HANDLE GARNISH	✓	✓
SAFETY		
ABS / TRC / BAS / EBD / VSC	✓	✓
ELECTRIC PARKING BRAKE W/BRAKE HOLD	✓	✓
AUTO PARKING	✓	✓
ANTI-THEFT SYSTEM	✓	✓
AUTO SPEED SENSING DOOR LOCK FUNCTION	✓	✓
CHILD RESTRAINT SEAT ANCHORS ON REAR	✓	✓
TYRE PRESSURE WARNING SYSTEM	✓	✓
POP-UP HOOD	✓	✓
FRONT & REAR SONAR-GUIDED PARKING ASSISTANCE SYSTEM (FR: 4+ RR: 4)	✓	✓
SEATBELTS WITH PRE-TENSIONERS AND FORCE LIMITERS	✓	✓
SRS AIRBAGS FOR IMPROVED PROTECTION: - FRONT AIRBAGS FOR DRIVER AND FRONT PASSENGER - CURTAIN SHIELD FRONT AND REAR AIRBAGS FOR BOTH SIDES - KNEE AIRBAGS - DRIVER + PASSENGER, FRONT & REAR SIDE	✓	✓
ADVANCED SAFETY		
LANE CHANGE ASSIST WITH BLIND SPOT MONITOR	-	✓
REAR CROSS TRAFFIC ALERT AND REVERSING BRAKE ALERT	-	✓



LUXURY		
CRUISE CONTROL	✓	✓
AIR CONDITIONING SYSTEM	DUAL ZONE AUTO	TRI ZONE AUTO
INTERMITTENT WIPERS (TIME ADJUSTMENT + WASHER-LINKED VARIABLE)	✓	✓
ANALOG CLOCK	✓	✓
ELECTROCHROMIC INSIDE REAR VIEW MIRROR	✓	✓
ILLUMINATED SCUFF PLATES (FR + RR) AUX / USB CONNECTIVITY	✓	✓
VOICE RECOGNITION FUNCTION POWER WINDOW WITH ONE-TOUCH FEATURE	✓	✓
JAM PROTECTION & SPEED CONTROL - ALL WINDOW	✓	✓
BACK GUIDE MONITOR	✓	✓
CENTRE CONSOLE (NEW DESIGN)	✓	✓
POWER REAR WINDOW SUNSHADE	✓	✓
STEERING WHEEL	3-SPOKE LEATHER	3-SPOKE LEATHER & WOOD
STEERING COLUMN: ELECTRIC -TILT + TELESCOPIC WITH MEMORY	✓	✓
WIRELESS CHARGER	-	✓
HEADS-UP DISPLAY	-	✓
HEADLAMP CLEANER	-	✓
INTERMITTENT WIPERS WITH RAIN SENSORS	-	✓
WOODEN TRIMS WITH AMBIENT LIGHTING + INNER HANDLE ILLUMINATION	-	✓
WOODEN TRIMS WITH AMBIENT LIGHTING + INNER HANDLE ILLUMINATION	-	✓
SEATS - 8-WAY ADJUSTABLE POWER ADJUSTED FRONT SEATS WITH 2-WAY LUMBAR SUPPORT	✓	WITH 4-WAY LUMBAR SUPPORT, ADJUSTABLE CUSHION LENGTH & MEMORY FOR DRIVER
SEAT MATERIAL	SYNTHETIC LEATHER	SMOOTH LEATHER
AUDIO & ENTERTAINMENT SYSTEM		
TOUCHSCREEN DISPLAY	8"	12.3"
10-SPEAKER STEREO	✓	✓
ANDROID AUTO & APPLE CARPLAY	✓	✓
MIRACAST TECHNOLOGY	✓	✓
OTHERS		
REMOTE ENGINE STARTER	-	✓
LED PKG WITH EXCLUSIVE DESIGN LOGO ILLUMINATION (FR)	✓	✓
SMART ENTRY AND SMART START / STOP SYSTEM	✓	✓
SPARE TYRE: TEMPORARY TYRE	✓	✓



GALLERY – ES350 PRIME

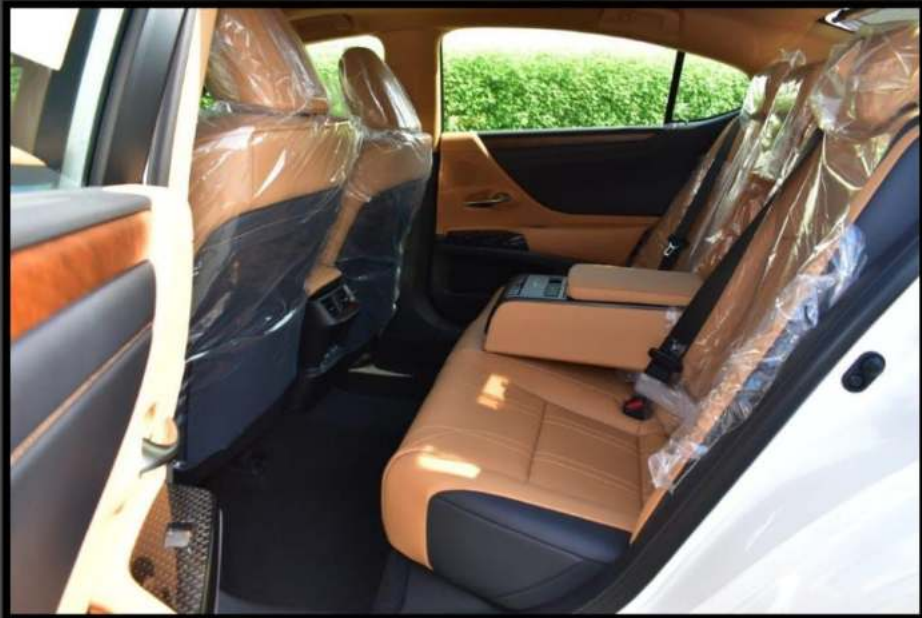






GALLERY – ES350 ELITE





CONTACT

Address

Showroom 19, DAZ (DUCAMZ), Ras Al Khor - Dubai - United Arab Emirates

Phone No

+971569957707

+971544400938

Email

info@saharamotorsfze.com

smfze@saharamotorsuae.com

WEBSITE

[HTTPS://SAHARAMOTORSFZE.COM](https://SAHARAMOTORSFZE.COM)

